

Transforming Transportation for Older Adults

2024 National Healthy Aging Symposium:
Innovation Across the Age-Friendly Ecosystem



Photo Credit: NADTC Photo Gallery

#HealthyAging2024



Office of
Disease Prevention
and Health Promotion



Today's Speakers



Moderated by:
Lori Gerhard
Administration for Community
Living



Barbie McBee
Rocky Mountain Rural Health



Danielle Nelson
Federal Transit Administration



Virginia Dize
National Aging and Disability
Transportation Center, USAgings



Office of
Disease Prevention
and Health Promotion



National Healthy Aging Symposium:
Innovation Across the Age-Friendly Eco-System

Navigating Park County, Colorado

Overcoming Transportation
Challenges in a Rural Landscape





Why is transportation important to a healthy aging community?

Without reliable transportation our population's economic and physical health decline:

Financial impact of delayed care increases medical costs:

Doctor's Visit: \$120.00 ER Visits: \$4,500.00

Private vehicle: \$45.00 Ambulance: \$2,886.00

Flight For Life: \$15,000.00

Physical impact on health due to delay of care:

Missed opportunity for preventative care

Disease progression

Delayed diagnosis which leads to poorer health outcome

Diminished quality of life/Shortening of lifespan

Park County Colorado:



Park County is the geographical center of the State of Colorado, with a population of 17,015. (2020 US Census)

Park County has two incorporated towns: Alma and Fairplay.

Fairplay is the County Seat

It is 2,193 square miles boasting an average 7 people per square mile

Most of the land is located 7,000 feet above sea level with the highest incorporated town in North America at 10,582 feet located in its northwest corner - Alma, CO 80420

Park County gets an average of 7 feet of snow per year.



Fairplay, Colorado

County Seat: Fairplay

- Population: 737
- Elevation: 9,948 ft
- Located in the NW corner of Park County

Travel Distances to Fairplay:

- Alma: 5.5 miles
- Bailey: 39 miles
- Como: 10.3 miles
- Guffey: 46 miles
- Hartsel: 18.7 miles
- Jefferson: 16.4 miles
- Lake George: 45.0 miles

Population Center: Bailey (Population: 9,065)



Travel Routes

Main Roads (two-lane highways):

- US 285: NW/SW
- State Highway 9: N/S
- US 24: E/W

Road Conditions: Most roads are unimproved dirt roads, with **ALL** highways and county roads subject to winter closures due to adverse weather conditions



A Common Social Media Post in Park County...

Colorado Department of Transportation (CDOT)

@ColoradoDOT

Jan 15, 2021

US 285 NB/SB: Safety closure between US 24 and MM 183. Adverse weather. Adverse Conditions Fairplay to Antero Junction, No Estimated Time for Reopen
<http://co.c-tr.us/?type=event&id=CARS5-29057>

Colorado Department of Transportation (CDOT)

@ColoradoDOT

🚫 Road Closed US 285 🚫 Safety closure on #US285 from Antero Junction to west of Grant (MP 162-205). Multiple blown over semis & blowing snow is causing low visibility. Plan for an extended closure, avoid the area, & check <http://cotrip.org> for updates. #KnowBeforeYouGo

9:36 AM · Jan 15, 2021 · Twitter Web App

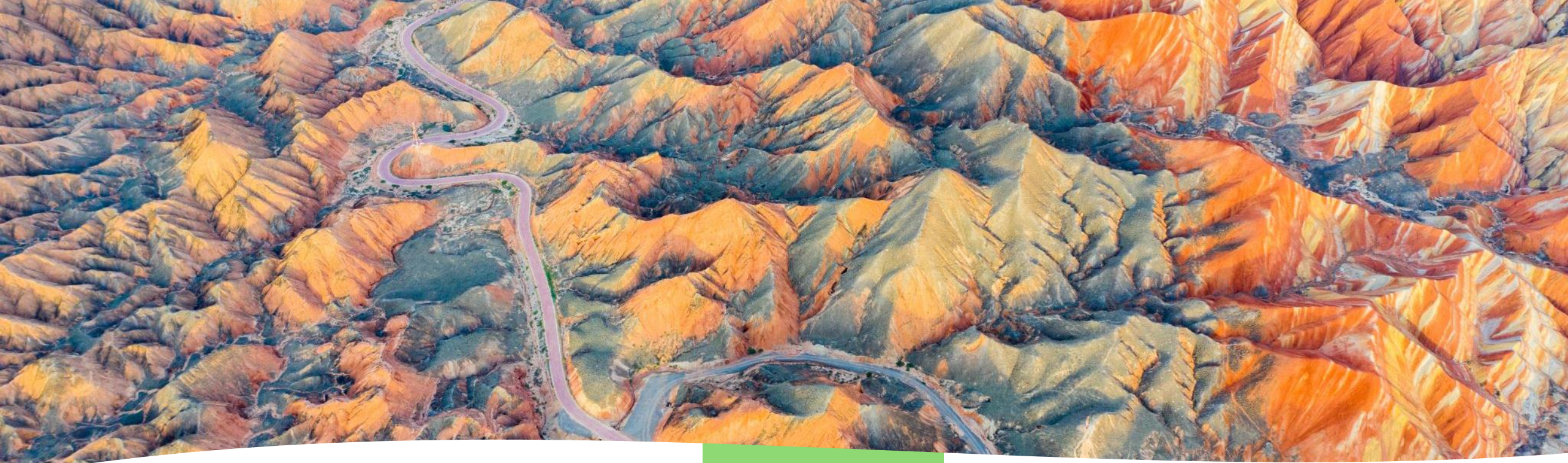


Transportation Options in Park County

- **Summit Stage:** Operated by Summit County Government has a single route along Colorado Highway 9 - Fairplay to Breckenridge with six trips per day
- **Bustang:** Operated by the Colorado Department of Transportation has a single route along US Highway 285 with one round trip per day
- **MedRide:** Health First Colorado (Colorado's Medicaid program) non-emergent transportation (NEMT) provider and most reliable in Park County, though others also serve the area



MEDRIDE



LARGEST
SUBDIVISION
IN PARK
COUNTY

Elkhorn Ranches
in Jefferson,
Colorado

680
properties

From Home to Highways

Distance from the main gate
to:

Highway
US 285

13.1 miles
for travel
to Denver

Highway
US 24

24.3 miles
for travel to
Colorado
Springs



MOVING PEOPLE

- **Door to Door:** With the exception of MedRide – which is limited to Medicaid Members only - there is no door-to-door service.
- **Travel to Transportation Options:** Most residents live in unincorporated subdivisions, which means they must travel on unimproved roads to access the only two transportation options.

Rural Living = Limited Resources

PARK COUNTY ASSETS

Family Medicine Practice (1)

Grocery store (1)

'Dollar' stores (3)

Multiple gas stations

PARK COUNTY DEFICITS

Hospital (0)

Pharmacy (0)

Home Health/Hospice Care (0)



Filling in the Gaps

Rocky Mountain Rural Health (RMRH) helps get people where they need to be

- **Mileage Reimbursement:**
 - Funded by private donations for individuals not qualifying for other programs
 - Partnership with Park County Senior Coalition to share reimbursement costs for community members
- **Community Health Workers:**
 - Utilize a network of resources to secure rides for those ineligible for other transportation programs

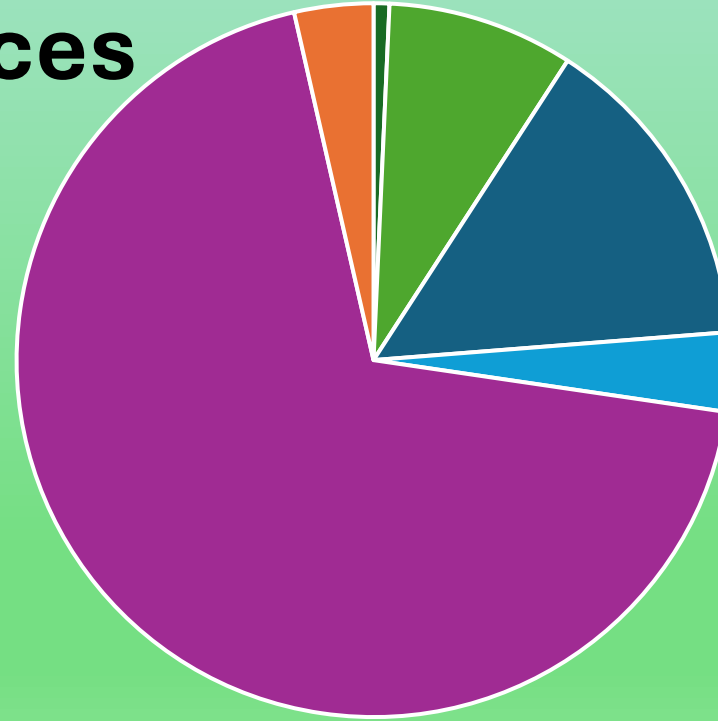


Results of mileage reimbursement and health workers efforts: RMRH Data 2023

Transportation Resources

- Summit Reimbursement
- CAF/FIC
- MedRide
- IntelliRide
- Envida

59
102
25
483
25
694





Funding source

Colorado Community Health Alliance (CCHA)

CCHA funding enables RMRH to connect Park County residents with essential services and resources that improve both physical and mental health.

This includes non-medical services that address critical needs affecting overall health.





Funding source

Summit Foundation

Funding from The Summit Foundation improves access to health care by supporting services such as:

- Health care navigation
- Insurance assistance
- NEMT reimbursement



Getting there is
half the fun...?





ROCKY MOUNTAIN RURAL HEALTH

HEALTHCARE ADVOCATES

719-836-2169

Contact Info

Rocky Mountain Rural Health

Barbie McBee, Program Director

Email: barbiem@rmrh.org

Phone: 719-836-2169

Website: RMRH.org

Physical address: 600 Main Street
Fairplay, Colorado

Mailing address: PO Box 1600 Fairplay,
Colorado 80440

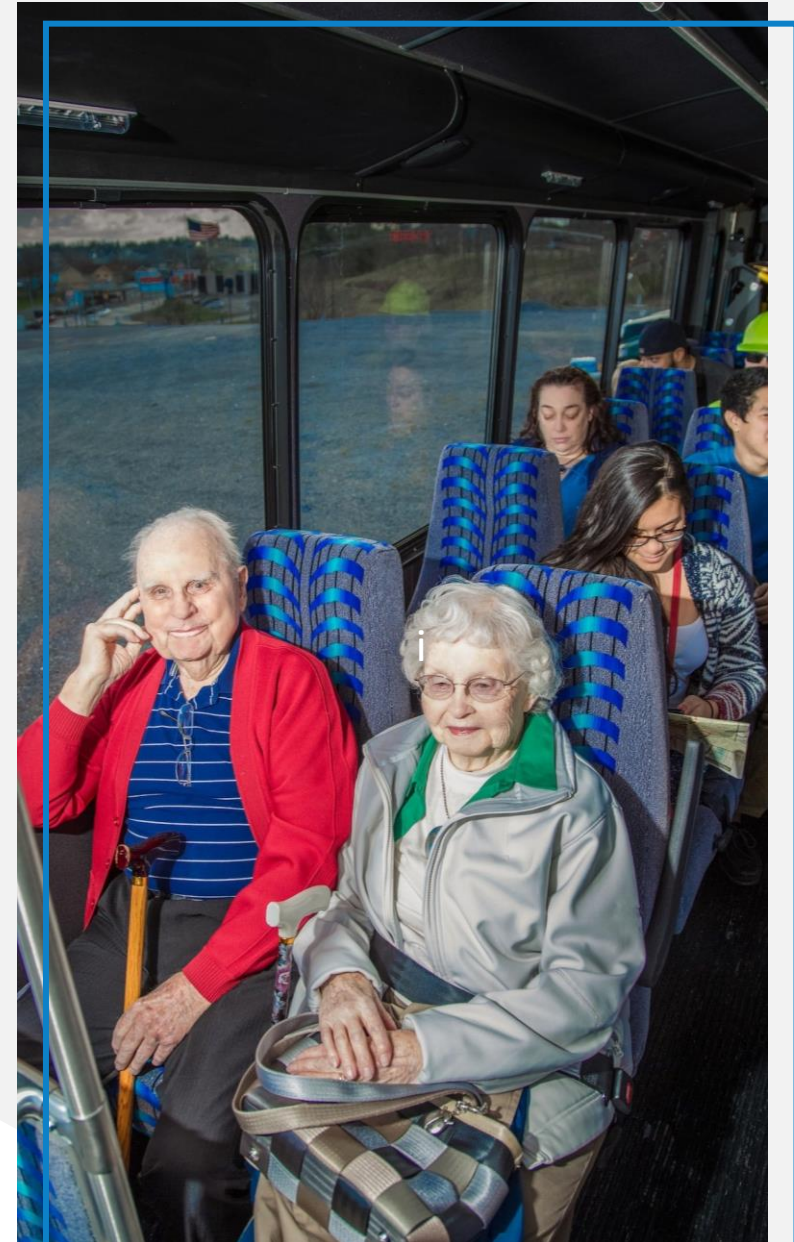
Transportation Coordination for Healthy Aging

Danielle Nelson, Office of Rural and Targeted Programs
National Healthy Aging Symposium: Transportation Panel

September 26, 2024



U.S. Department of Transportation
Federal Transit Administration



Federal Transit Administration (FTA)



FTA Mission

Improve America's Communities through Public Transportation



FTA Vision

A Better Quality of Life for All Built on Public Transportation Excellence

FTA provides financial and technical assistance to local public transit systems, including buses, subways, light rail, commuter rail, trolleys and ferries.

July 9, 2024, marks the 60th anniversary of the federal transit program.

In this [video](#), we provide an overview of the federal transit program, from supporting small independent bus systems and a few subway lines in the 1960s to today's network of transit providers serving thousands of communities nationwide.

Sources: <https://www.transit.dot.gov/about-fta> and <https://www.transit.dot.gov/about/mission-vision-values-and-goals>

FTA's Enhanced Mobility of Seniors and Individuals with Disabilities and Innovative Coordinated Access and Mobility Programs

Enhanced Mobility of Seniors and Individuals with Disabilities Formula Grant Program (Section 5310)

- Formula program for meeting the transportation needs of older adults and people with disabilities (PWD). Funds are apportioned based on each state's share of the population for these two groups. The program aims to improve mobility for seniors and PWD by removing barriers to transportation service and expanding transportation mobility options.

Innovative Coordinated Access and Mobility Grant Program (ICAM)

- Competitive program to improve access to public transit and non-emergency medical transportation by building partnerships among health, transportation and other service providers to support innovative projects for the transportation disadvantaged.



	FY 2024 (in millions)	FY 2025 (in millions)	FY 2026 (in millions)		FY 2024 (in millions)	FY 2025 (in millions)	FY 2026 (in millions)
5310 Formula Grants	\$438.90	\$446.93	\$457.02	ICAM Pilot Program	\$4.82	\$4.92	\$5.05

Sources:

<https://www.transit.dot.gov/funding/grants/enhanced-mobility-seniors-individuals-disabilities-section-5310> and <https://www.transit.dot.gov/funding/grants/grant-programs/access-and-mobility-partnership-grants>

Coordinated Plan

Projects funded through Section 5310 must be included in the Coordinated Plan.

A locally developed, coordinated transportation plan:

- Identifies the transportation needs of individuals with disabilities, seniors, and people with low incomes.
- Provides strategies for meeting those needs.
- Prioritizes transportation services for funding and implementation.

Inclusion in the plan can take the form of:

- Strategies; Activities; and/or Specific Projects.

The plan must be developed and approved through a process that includes participation by:

- Seniors; Individuals with disabilities; Representatives of public, private, and nonprofit transportation; Human services providers; and Other members of the public.
- Stakeholders must be actively involved in the development of the plan and be given approval authority over it.

Projects must be designed to address a **gap** or **objective** identified and prioritized by the plan.



Source: [Coordinated Public Transit Human Services Transportation Plans | FTA \(dot.gov\)](https://www.fta.dot.gov/Coordinated-Public-Transit-Human-Services-Transportation-Plans)

Is There an FTA Grantee in Your Community?



- About Us
- CCAM
- News
- Resource Central
- Training
- Mobility Management

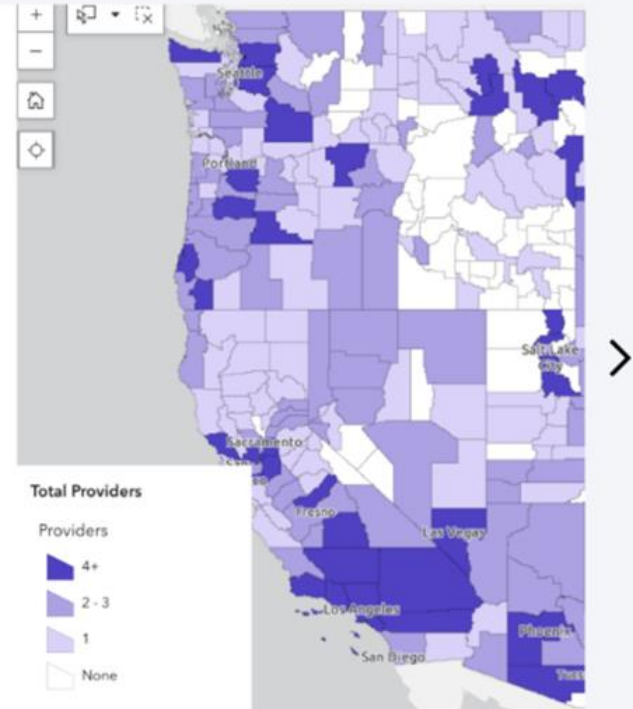
Community Transportation Map

The Community Transportation Map is a record of FTA funded transportation agencies across the nation and it now shows a heat map of agencies nationwide.

Mobility management and volunteer driver programs have been added to our service categories and we are asking for your help populating the map! Use our quick survey to submit your information so that you can be added.

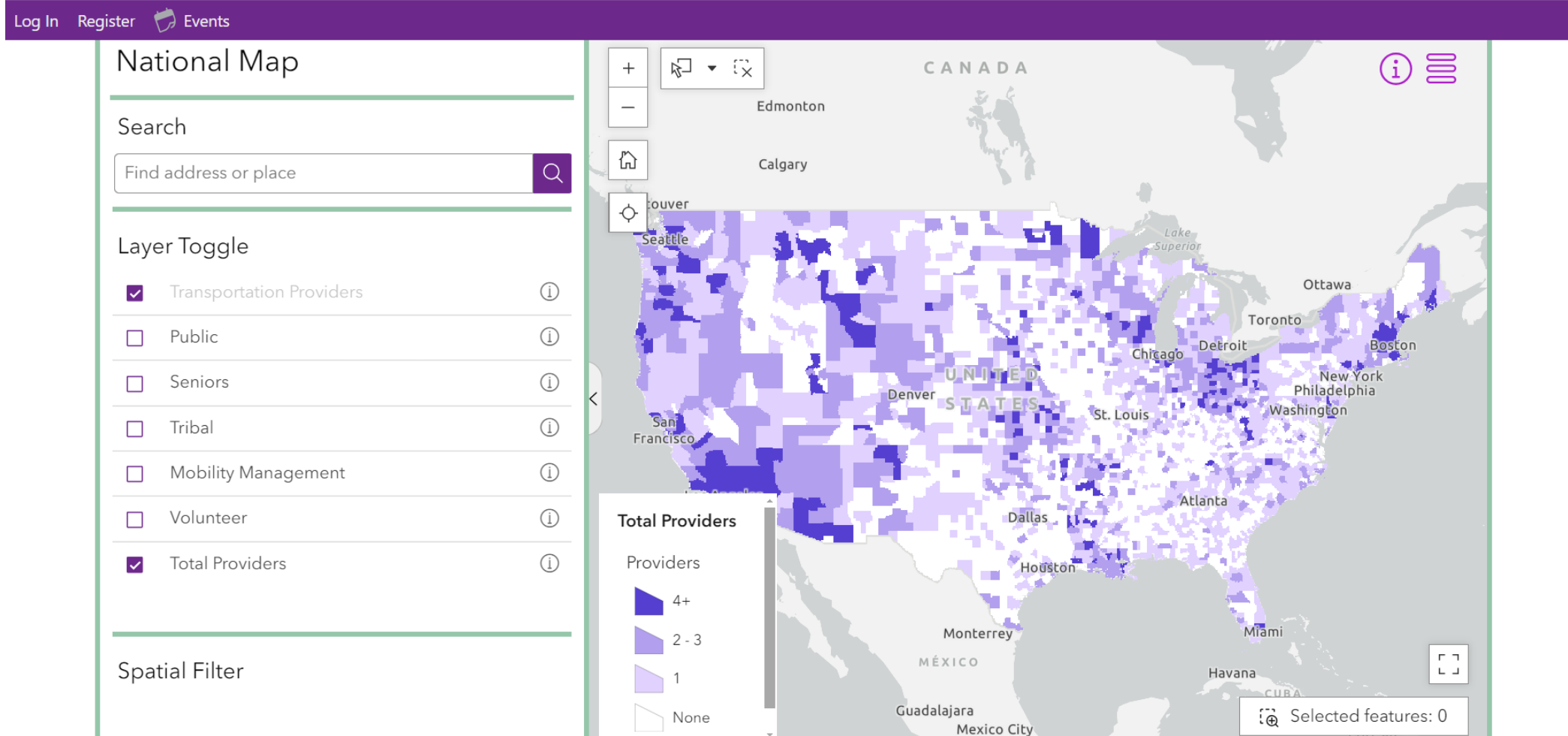
See what the map can do

Add or update your information



Source: <https://nationalcenterformobilitymanagement.org/community-transportation-database/>

Community Transportation Map



Source: <https://nationalcenterformobilitymanagement.org/community-transportation-database/>

Half Fare / Reduced Fare

Public transportation law requires public transit agencies that receive FTA funding under the Urbanized Area Formula Program (Section 5307) to offer half fare or reduced fare to people with disabilities and older adults during off-peak hours for fixed-route services (e.g., bus, rail, passenger ferry).



Source: <https://www.transit.dot.gov/are-transit-providers-required-offer-reduced-transit-fares-seniors-people-disabilities-or-medicare>

Enrolling in Half Fare

To enroll in half fare, contact your local transit agency.
Examples of transit agency implementation of half fare:

- **Washington, DC:** <https://www.wmata.com/fares/Reduced-Fare-Programs/>
- **Portland, OR:** <https://trimet.org/fares/reduced.htm#seniors>
- **St. Louis, MO:** <https://www.metrostlouis.org/reduced-fare-program/>
- **Fredericksburg, VA:**
<https://www.fredericksburgva.gov/1716/Half-Fare-Program>
- **Dallas, TX:** <https://www.dart.org/fare/general-fares-and-overview/reduced-fares#senior>
- **Mobile, AL:** <https://www.thewavetransit.com/183/Fares-Passes>



Source: <https://www.transit.dot.gov/are-transit-providers-required-offer-reduced-transit-fares-seniors-people-disabilities-or-medicare>

Half Fare or Free?

Some transit agencies go beyond the requirement for half fare and offer free public transit for older adults.

Examples include:

- Harrisburg, PA's **Senior Fare Free Program** where passengers 65 years of age or older ride free on the rabbittransit fixed route bus system:
<https://www.rabbittransit.org/services/special-fares-discounts/>
- Charleroi, PA's **Persons 65+ Free Transit Program** on Mid Mon Valley Transit: <https://mmvta.com/free-65-transit-program/>






Source: <https://www.transit.dot.gov/are-transit-providers-required-offer-reduced-transit-fares-seniors-people-disabilities-or-medicare>

What is the Coordinating Council on Access and Mobility (CCAM)?

Mission

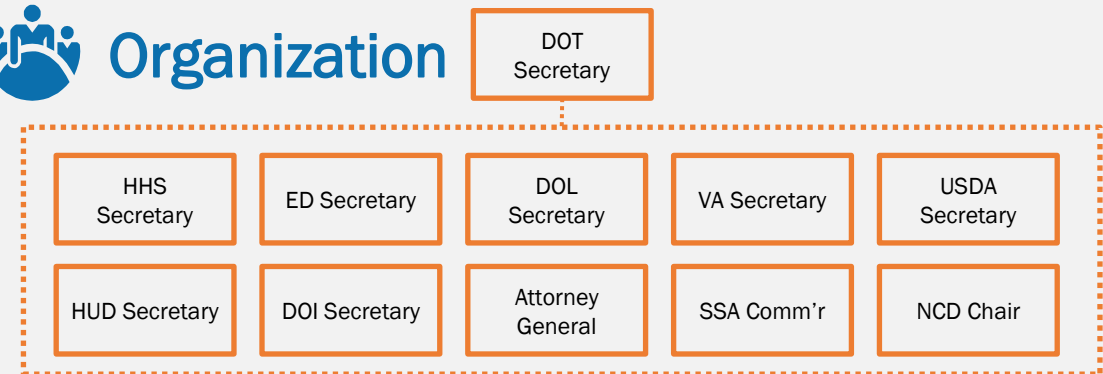
The CCAM issues policy recommendations and implements activities that improve the **availability, accessibility, and efficiency** of transportation for the following targeted populations:

-  Individuals with Disabilities
-  Older Adults
-  Individuals of Low Income

History

The CCAM is an interagency partnership **established in 2004** by **Executive Order 13330** to coordinate the efforts of the Federal agencies that fund human service transportation for CCAM targeted populations. Section 3006(c) of Pub. L. 114-94 requires the CCAM to have a strategic plan to improve Federal coordination of transportation services.

Organization



Source: <https://www.transit.dot.gov/coordinating-council-access-and-mobility>

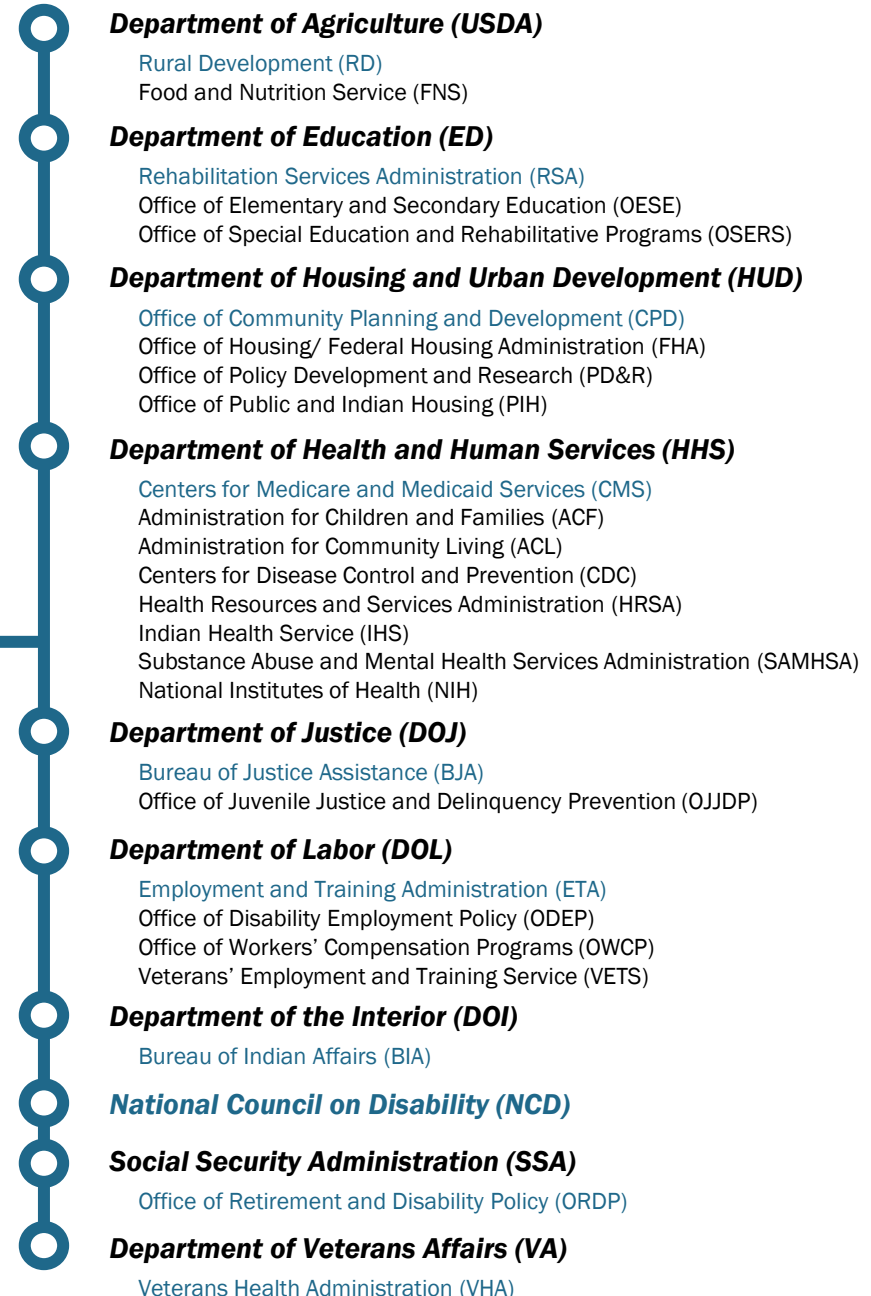
Who are the CCAM Agencies?

The CCAM members work together to promote accessible, efficient, and effective transportation options to serve the needs of people with disabilities, older adults, and individuals of low income.

Together, the CCAM members administer **130 Federal programs** that may fund **human services transportation** for CCAM's targeted populations.

Department of Transportation (DOT)
Federal Transit Administration (FTA)
Federal Highway Administration (FHWA)
National Highway Traffic Safety Administration (NHTSA)

Key:
Lead Agency
Participating Agency



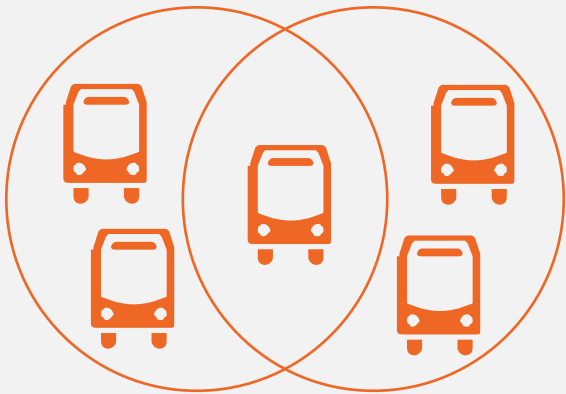
Sources: <https://www.transit.dot.gov/ccam/about/agencies> and <https://www.transit.dot.gov/regulations-and-programs/access/ccam/about/2023-2026-coordinating-council-access-and-mobility>

What are the Benefits of Transportation Coordination?

Federal interagency transportation coordination improves the efficiency, accessibility, availability, and innovation of transportation, and benefits Americans in several ways:

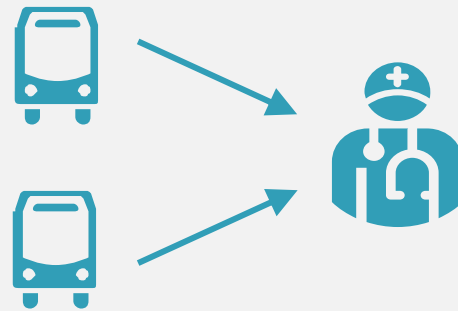
Coordinated transportation improves:

Efficiency



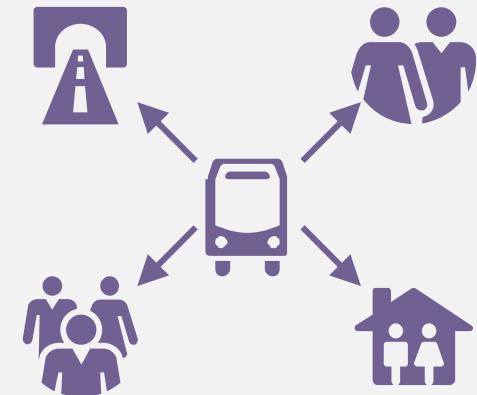
Funding recipients save funds by sharing resources and reducing redundancy.

Accessibility



Funding recipients collaborate to provide more options.

Availability



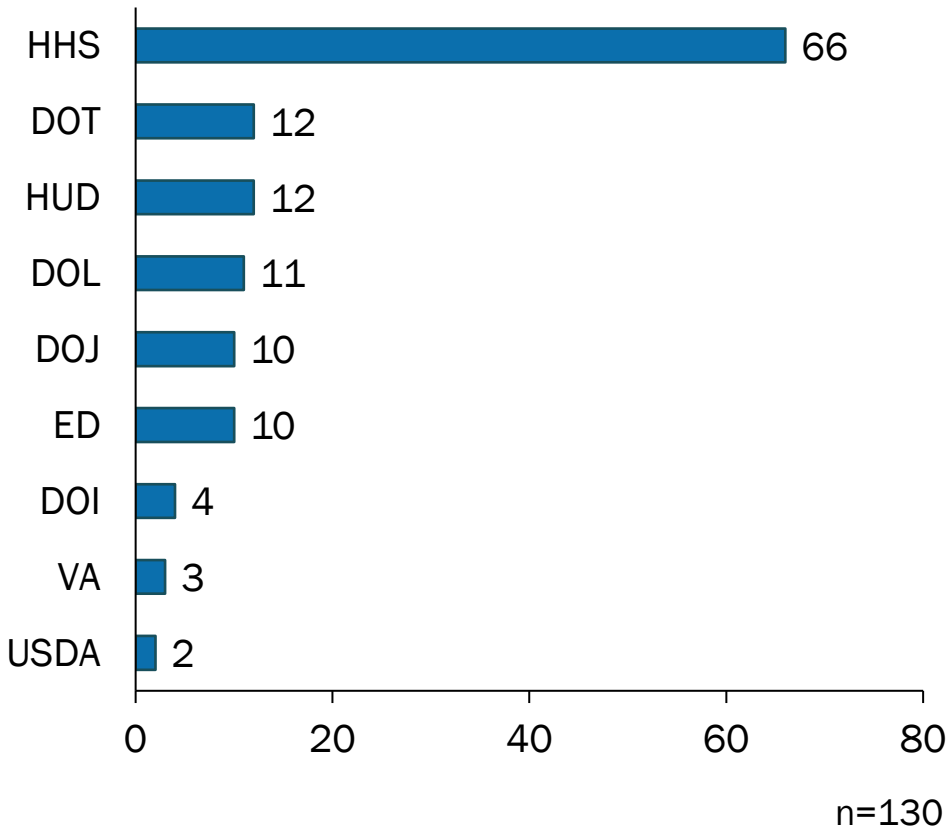
Streamlined policies allow programs to serve more people and regions.

Source: <https://www.transit.dot.gov/regulations-and-programs/access/ccam/about/transportation-coordination>

What Federal Programs May Fund Transportation?

The [CCAM Program Inventory](#) identifies 130 Federal programs that are able to provide funding for transportation for people with disabilities, older adults, and/or individuals of low income.


Number of Programs by Department



Source: <https://www.transit.dot.gov/regulations-and-guidance/ccam/about/ccam-program-inventory>

Sample of the 130 Programs

	<p>Department of Health and Human Services programs:</p> <ul style="list-style-type: none"> • Child Care & Development Fund (Tribes) • Native Employment Works • Older Americans Act (OAA) programs • Special Diabetes Program for Indians • Diabetes Prevention & Treatment Projects • Rural Health Opioid Program • Health Center Program
	<p>Department of Transportation programs:</p> <ul style="list-style-type: none"> • Section 5310 Enhanced Mobility of Seniors and Individuals with Disabilities • Section 5311 Formula Grants for Rural Areas • Recreational Trails Program • Tribal Transportation Program • Innovative Coordinated Access and Mobility Pilot Program
	<p>Department of Housing and Urban Development programs:</p> <ul style="list-style-type: none"> • Indian Community Development Block Grants • Supportive Housing for the Elderly • Continuum of Care Program • Indian Housing Block Grant
	<p>Department of the Interior programs:</p> <ul style="list-style-type: none"> • Indian Employment Assistance • Indian Child and Family Education • Indian Education Assistance to Schools • Indian Schools – Student Transportation

 ***If an organization receives funding from one of these programs, a portion of the funds may be used for transportation.***

Rural Transportation Coordination Example

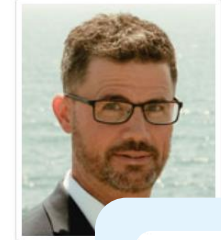
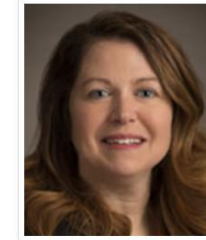
In New Hampshire, a State Partnership between Transportation and Public Health led to fund braiding: A CDC COVID-19 Health Disparity Grant supplements funds for a NH DOT Section 5310 rural transportation project.

Impact: \$3M over 2 years that helps underserved communities.

Partnering for Rural Transportation, with Alisa Druzba and Steve Workman

Date: April 5, 2022
Duration: 41 minutes

An interview with Alisa Druzba, director of the [New Hampshire Office of Rural Health and Primary Care](#), and Steve Workman, director of [Transport New Hampshire](#), discussing the development of the New Hampshire Mobility Management Network and how it provides options for rural patients. They explain the importance of collaboration with local, state, and federal agencies to ensure long-term sustainability moving forward.



Listen Now



CDC Funding through NHDHHS



FTA Section 5310 Funding through NHDOT



Source: <https://www.ruralhealthinfo.org/podcast/transportation-partnering-apr-2022>

Transportation Coordination Policy: Incidental Use

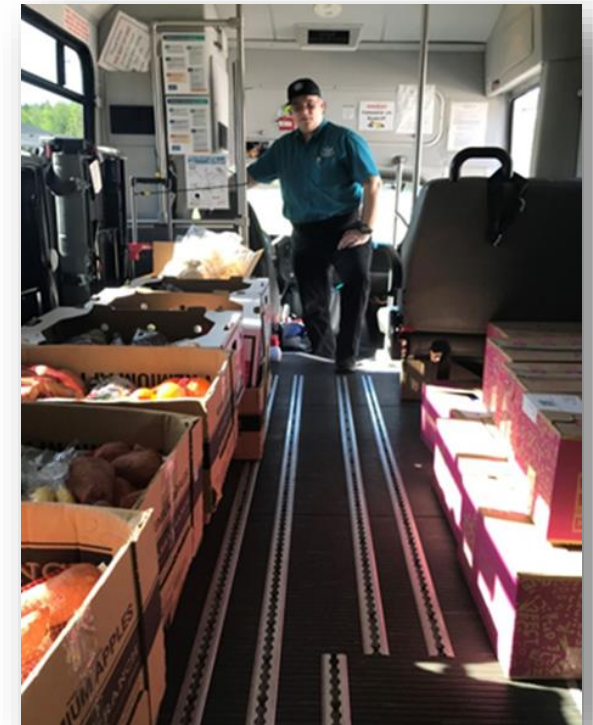
Incidental use occurs when FTA grant recipients allow the use of federally funded asset (e.g., van) by another public or private entity for non-transit purposes. The non-transit activity may not reduce or limit transit service. **Incidental use of federally funded assets is permitted for recipients of FTA grant programs.** The arrangement may vary from free to reimbursement to the FTA grantee for the fully allocated cost of using the vehicle; for example:

Vehicle Sharing

- A van, purchased with FTA funding, is currently operated by ABC Nonprofit Organization, a sub-recipient to the State DOT. ABC operates Monday – Friday (M-F). The local CCAM program grantee (e.g., Centers for Disease Control and Prevention Racial and Ethnic Approaches to Community Health Program) uses the vehicle on weekends to take their low-income participants to everyday destinations, such as access to healthy food and recreation opportunities.

Meal Delivery

- A vehicle purchased with FTA funding is currently operated by XYZ Transit. XYZ Transit provides public transit during peak hours: 6:30 am - 10:00 am and 4:00 pm - 6:30 pm M-F. The local CCAM grantee (e.g., Older Americans Act Nutrition Program that reduces hunger and malnutrition of older adults) uses the vehicle during lunchtime.

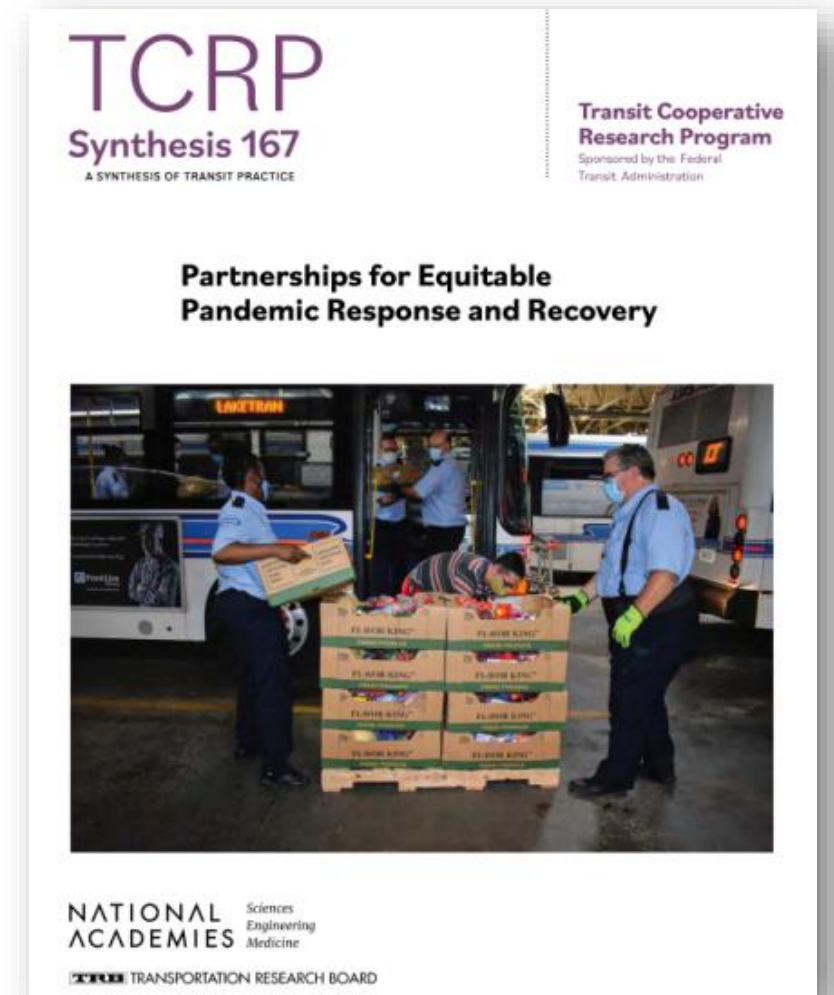


Source: [Transportation Coordination | FTA \(dot.gov\)](#)

Incidental Use Case Studies

Transportation Cooperative Agreement Program (TCRP) Synthesis 167: Partnerships for Equitable Pandemic Response and Recovery:

- Objective: Identify and document COVID-19 public transit incidental cross-sector partnerships for essential services to vulnerable populations, how the partnerships developed, and what critical services were provided to the community.
- Explored the state of practice
 - 1.) Literature review
- Transit agencies shared lessons learned and challenges
 - 2.) Survey
 - 3.) Case studies (4)



Source: <https://www.trb.org/Publications/Blurbs/182919.aspx>

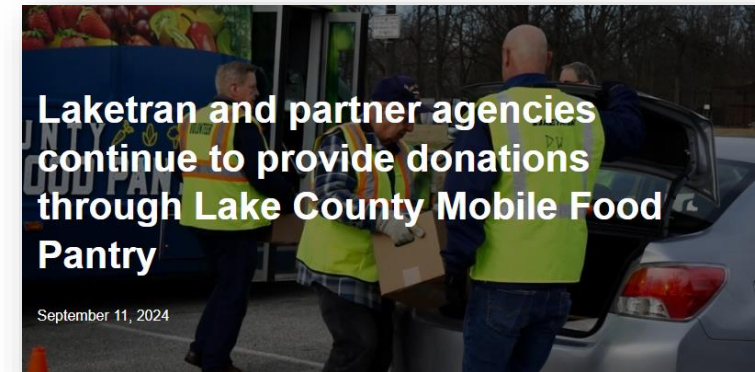
Case Study: Laketran

Laketran - located in Painesville, Ohio - offers Dial-a-Ride demand response and fixed route bus services, as well as a Park-n-Ride commuter service that transports workers to downtown Cleveland. COVID-19 Initiatives:

- **Provided access to food. A three-phase initiative involving grocery delivery, grocery pickup, and establishing a permanent mobile food bank.**
- Provided access to vaccination sites. Free rides to residents traveling to vaccine appointments and a new shuttle to a mass vaccination site.
- VAX & RIDE Contest to incentivize vaccinations. Contest to award free rides to vaccinated residents

In 2024, the access to food program continues, supporting Lake County seniors, 60 years and older:

- Program video: <https://youtu.be/LkAxmLgrHy4>
- Recent press release: <https://laketran.com/laketran-and-partner-agencies-continue-lake-county-mobile-food-pantry-for-another-year-at-locations-countywide/>



Source: <https://laketran.com/laketran-and-partner-agencies-continue-lake-county-mobile-food-pantry-for-another-year-at-locations-countywide/>



LAKE COUNTY

MOBILE FOOD PANTRY

CCAM National Technical Assistance Center

Overview

The CCAM TA Center supports [CCAM members](#), Federal agencies, their grantees, partners, and stakeholders in improving transportation access for people with disabilities, older adults, and individuals of low income.

Mission

Promote and facilitate human services transportation, public transit, and non-emergency medical transportation (NEMT) coordination that advances people's access to everyday destinations.

Center Funding

\$2.5 million for year one of the five-year cooperative agreement.

Center Activities Include:

- Grant program that offers funding for multisector planning or pilot projects to develop and test innovative transportation solutions.
- Developing case studies, promising and best practices, videos, etc.



View the full NOFO [here](#).

Source: <https://www.transit.dot.gov/notices-funding/competitive-funding-opportunity-coordinating-council-access-and-mobility-ccam>

FTA's Transportation Technical Assistance Coordination Library (TACL)



<http://transportation-tacl.org>

Find transportation coordination resources from a diverse range of transportation technical assistance (TA) centers and the Federal Transit Administration (FTA).

Participating TA Centers:

- National Aging and Disability Transportation Center (NADTC)
- National Center for Applied Transit Technology (N-CATT)
- National Center for Mobility Management (NCMM)
- National Rural Transit Assistance Program (National RTAP)
- Shared-Use Mobility Center (SUMC)
- Transit Workforce Center (TWC)

Source: <https://transportation-tacl.org/>

National Highway Traffic Safety Administration (NHTSA) Older Driver Safety

RESOURCES:

- [Clearinghouse for Older Road User Safety \(ChORUS\)](#)
- [Traffic Safety Marketing](#)
- [NHTSA Older Driver Page](#)
- [Older Population Traffic Safety Fact Sheet](#)
- [Countermeasures That Work](#)
- [NCSA Tools, Publications, and Data](#)
- [NHTSA Image Library](#)

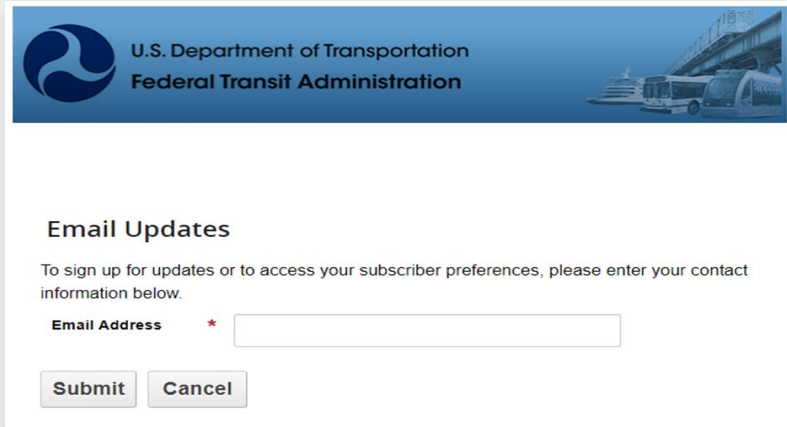
For more information contact:

Taylor Bee, MPH, CPH
Highway Safety Specialist
taylor.bee@dot.gov



Sources: <https://www.trafficsafetymarketing.gov/safety-topics/older-driver-safety#2486>
and <https://www.nhtsa.gov/book/countermeasures-that-work/older-drivers/key-resources>

FTA Contact Information



The screenshot shows the top of a web form for the U.S. Department of Transportation Federal Transit Administration. It includes the agency logo and name, a header image of transit vehicles, and a section titled "Email Updates" with instructions to sign up for updates or access subscriber preferences. There is an "Email Address" input field with a red asterisk, and "Submit" and "Cancel" buttons.

Sign up for **GovDelivery** notifications:

<https://public.govdelivery.com/accounts/USDOTFTA/subscriber/new>

Lynn Winchell-Mendy
NCMM & CCAM TA Center

Lynn.winchell-mendy@dot.gov

Matt Lange
Section 5311
Program Manager
Matt.lange@dot.gov

Destiny Buchanan
Section 5310
Program Manager
destiny.buchanan@dot.gov

Elan Flippin-Jones
Tribal Transit
Program Manager
elan.flippin@dot.gov

Thank you!

Danielle Nelson

(202) 366-2160

CCAM@dot.gov

Danielle.Nelson@dot.gov



U.S. Department of Transportation
Federal Transit Administration

Transforming Transportation for Older Adults

2024 National Healthy
Aging Symposium

Virginia Dize
USAgings/NADTC



*Photo Credit: City of Boston's Commission on
Affairs of the Elderly, Boston, MA*

National Aging & Disability Transportation Center

- NADTC is a federally recognized technical assistance center funded through an agreement between Easterseals, USAging and the Federal Transit Administration



National Aging & Disability Transportation Center

What We Provide:

- Technical Assistance & Training
- Publications & Resources
- Partnership Coordination
- Community Grants and Coalitions

US Aging



Photo Credit: Capacity Builders, Farmington, NM

Transportation Options

- Fixed Route Public Transit
- ADA Paratransit (limited-service area)
- Demand Response Transportation
- Transportation on Demand:
 - Taxi, Uber, Lyft
 - Micromobility
 - Microtransit
- Neighborhood Shuttles
- Medicaid Non-Emergency Medical Transportation
- Friends, Family and Caregivers*
- Volunteer Services
- Driving
- Transportation Vouchers
- Walking/Biking

A Network of Transportation Partners

- One-Call/One-Click Transportation Resource Centers
- Mobility Managers
- Transportation Options Counseling Programs
- Public Transit
- Human services transportation programs
- Travel Trainers
- Aging and Disability Resource Centers (ADRCs)
- Area Agencies on Aging (AAAs)
- Centers for Independent Living (CILs)
- 2-1-1
- And more....

Biggest Transportation Needs

Top Destinations

- Medical
- Grocery
- Visit Family & Friends
- Pharmacy

Source: NADTC 2021 Survey of Diverse Older Adults, Younger Adults with Disabilities and Caregivers

Transportation Funding

- Enhanced Mobility for Seniors and Individuals with Disabilities (Section 5310)
- Other Federal Transit Administration (FTA) Funding: Sections 5307, 5311
- Older Americans Act
- State Funding
- Local Funding
- Private Funding
- Fares

Community Transportation Challenges

- Affordability
- Funding
- Repeat Needs (e.g., dialysis, cancer treatment, adult day services)
- Coordination of programs, funding
- Cross jurisdictional travel
- Availability of transportation options/lack of options (e.g., rural)
- Access to transportation information

What would a transformed transportation system look like for older adults?

- **Safety, Accessibility, Affordability**
- Infrastructure, e.g., sidewalks, “safe pathways”, elevators/escalators, signage
- Healthcare access
- Housing & transportation connections
- Neighborhood connections
- Engagement with friends, neighbors and family and in community activities
- Opportunities to live, work & play

A vibrant, livable community for everyone!

Transportation for varied needs & preferences

- Information
- Scheduling rides – easy to book, predictable
- Rider assistance when needed
- Courtesy
- Affordable and free rides
- Family or companions can ride on with them
- Inclusion

Considerations for creating inclusive transportation

- Inclusion of older adults, people with disabilities and caregivers in planning
- Equity – underserved and marginalized communities must be at the table
- Accessibility of rides and information supports and enables participation

Resources

- [Transportation-Options for Older Adults and People with Disabilities](#)
- [Transportation Funding Guide](#)
- [NADTC-National Diversity Survey of Transportation](#)
- [NADTC-Transportation Provider Survey](#)

National Accessible Transportation Accelerator Network (NATAN)

Nationwide network of over 1,700 people

Monthly newsletter with events, resources, funding opportunities, surveys, news, and more.

Virtual Office Hours: Accessible Transit Inclusion and Partnerships, September 27, 2024, 1:00-2:00 PM ET [Register here](#)

<https://acl.gov/TransportationCenter>



Accessible Transportation
Resource Center



Email: contact@nadtc.org

Toll-free: 866-983-3222

Website: www.nadtc.org

- **Find us** on Facebook, X, YouTube and LinkedIn



Moderated Question and Answer



Office of
Disease Prevention
and Health Promotion



**Next Up at 4:20 pm ET:
Empowering Caregivers and Strengthening
Support for Older Adults and
Supporting Health through Affordable, Safe, and
Accessible Housing**

Go to your Whova platform to join!



Office of
Disease Prevention
and Health Promotion



Thank You!

OASH

Office of
Disease Prevention
and Health Promotion

