

# AFPHS 6Cs Training and Implementation Guide



---

Part I: Introduction to AFPHS and  
6Cs Framework

---

Part II: Building the Foundation  
for AFPHS Adoption

---

Part III: Capacity Building—  
Module Specific

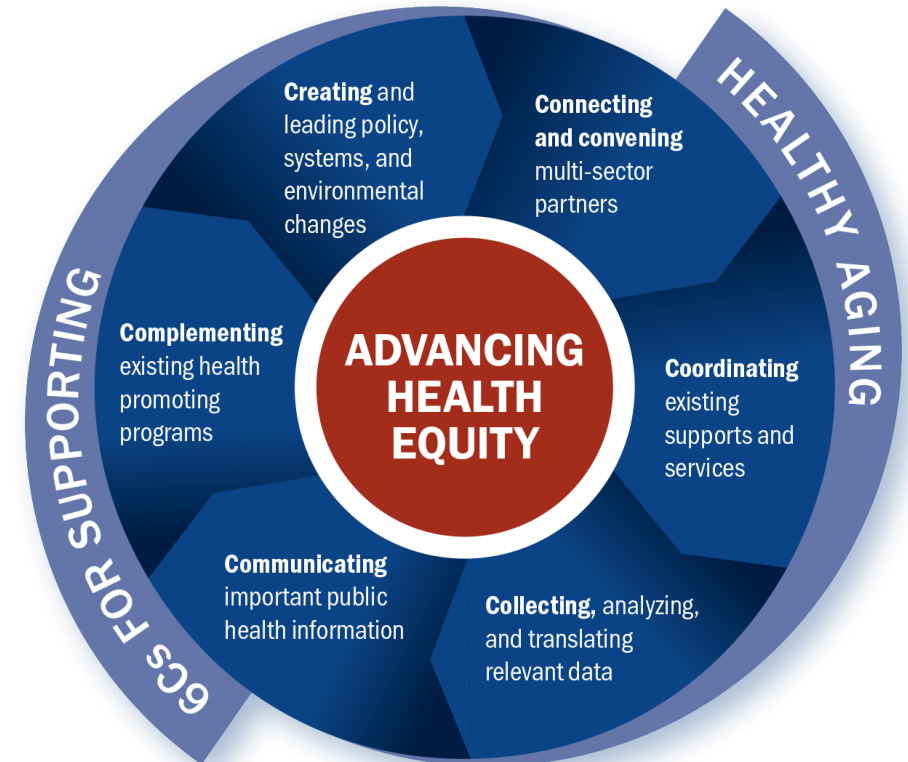
---

Part IV: Development and  
Adoption of AFPHS Action Plan

# AFPHS 6Cs Framework

---

- C1: Importance and value of having a champion
- C2: Multi-sector collaboration
- C3: Acknowledge historical roles in serving older adults
- **C4: Data is crucial for making the case**
- C5: Engage partners, community, policymakers
- C6: So many roles for public health!





## Module 4: Collecting, Analyzing, and Translating Data (C4)

# Module 4: Collecting, Analyzing, and Translating Data

---

1. Identify examples of data dashboards, indicators, and data sources that could be considered for inclusion into broader public health data profiles or a data dashboard.
2. Identify partners and potential opportunities for creating or expanding their jurisdictions' data dashboard including older adult health and well-being.
3. Gain practical experience in creating an outward-facing resource that includes older adult health data.

# The Mississippi State-wide AFPHS Workplan

Goal 4: Collecting, Analyzing, and Translating Relevant Data			
Strategy	Action Steps	Year	Key Indicators
<b>Strategy #1</b> Identify existing data sources related to aging in the state	<b>Action A:</b> Identify variables that would inform a robust data set for accurate and timely aging information	2	<ul style="list-style-type: none"> <li>Variables identified</li> <li>Existing data sources identified</li> <li>Data work group established</li> <li>Data work plan developed</li> </ul>
<b>Strategy #2:</b> Conduct a gap analysis of the aging data sources to determine what may be missing	<b>Action A:</b> Survey partners and stakeholders to ascertain the available data and where the gaps are.	1-3	
<b>Strategy #3:</b> Identify healthy aging data that would be useful in conducting community needs assessments to track progress on goals and objectives	<b>Action A:</b> Establish a data work group to inform and advise the most useful and appropriate data that would best serve the purposes of AFPH in Mississippi	1-3	

# Capacity Building Steps

- Review the strategies in the MS statewide plan
- Review collecting, analyzing and sharing data on older adults aligns with the 10 Essential Public Health Service
- Identify opportunities to engage partners through the State or Community Health Improvement Plan process
- Explore other assessment resources that focus on older adults
- Explore data sources on population changes and those specific to older adult health and well-being

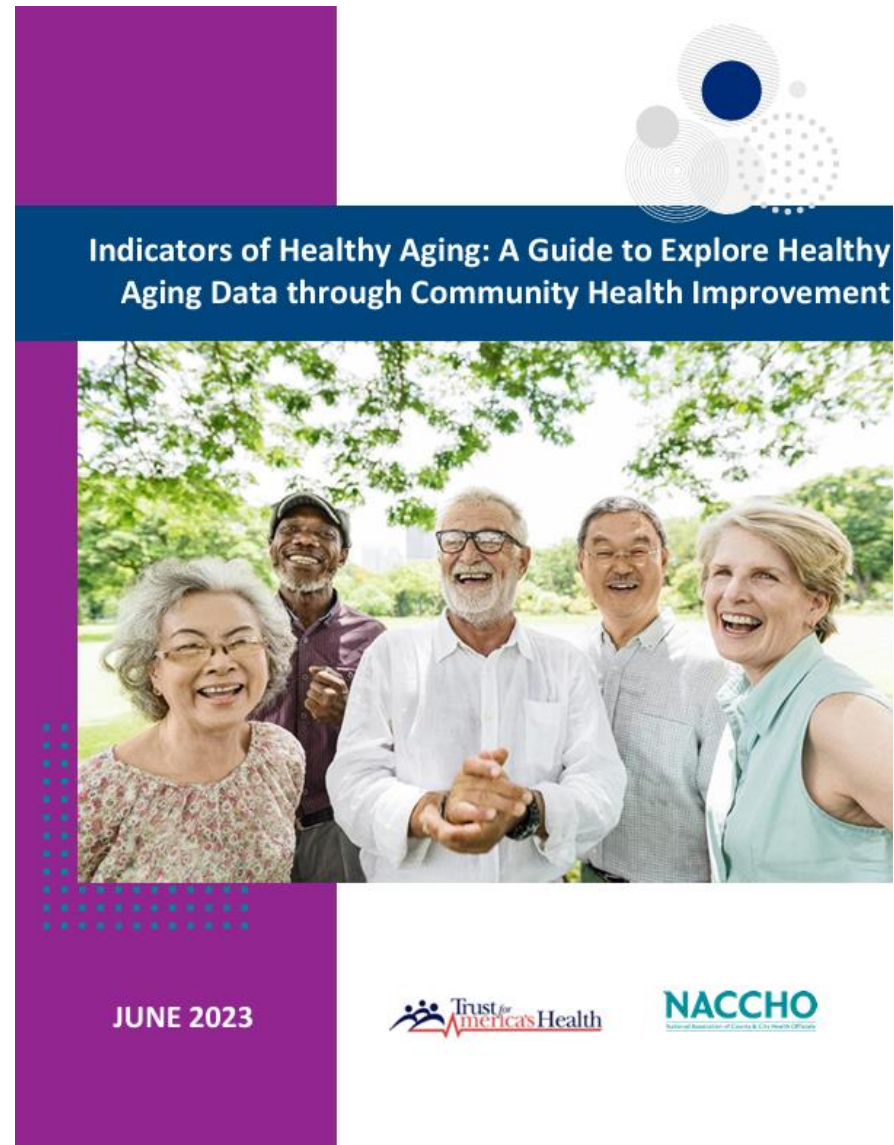
## Capacity Building Activities

The activities listed below are intended for consideration and are not exhaustive. These strategies are based on the activities of state, local, tribal and territorial health departments that are building age-friendly public health systems. Practitioners should use each of the activities listed below to prepare for the application portion of this Module, leading to the development of a profile of older adults in your state.

Activities/Actions	Resources to Explore	Completed
Review the C4 strategies in the Mississippi AFPHS Statewide Plan. Which of these strategies do you believe are feasible in your jurisdiction? Which of these strategies would you like to see implemented in your jurisdiction?	<ul style="list-style-type: none"> <li>◇ <a href="#">Mississippi AFPHS Statewide Plan</a></li> </ul>	
Review the section in the TFAH brief linked here on how C4—collecting, analyzing and sharing data on older adults—aligns with the 10 Essential Public Health Services.	<ul style="list-style-type: none"> <li>◇ <a href="#">How the 10 Essential Public Health Services Align with the AFPHS 6Cs Framework</a></li> </ul>	
Identify opportunities to engage partners through the State or Community Health Improvement Plan process.	<ul style="list-style-type: none"> <li>◇ <a href="#">Developing a State Health Improvement Plan</a></li> <li>◇ <a href="#">Charter Template and Guide</a></li> <li>◇ <a href="#">Designing Data Dashboards Using a Health Equity Lens</a></li> <li>◇ <a href="#">Leveraging Healthy People 2030 to Build Non-Traditional Multisector Partnerships</a></li> <li>◇ <a href="#">Community Health Improvement Planning (CDC)</a></li> <li>◇ <a href="#">CHA/CHIP Trainings and Tools</a></li> <li>◇ <a href="#">Community Health Assessment Toolkit   ACHI (healthycommunities.org)</a></li> <li>◇ <a href="#">Mobilizing for Action through Planning and Partnerships (MAPP) - NACCHO</a></li> <li>◇ <a href="#">Phase 6: Taking and Sustaining Action - NACCHO</a></li> <li>◇ <a href="#">SDOH-Partnership-Evaluation-Guide-V4-FINAL.pdf (naccho.org)</a></li> </ul>	

# Indicators of Healthy Aging: A Guide to Explore Healthy Aging Data Through Community Health Improvement

<https://afphs.org>



# Practical Application: Create a Communication Plan



## Application Component

### Develop an older adult state profile:

1. Create a list of partners you may need to add information about older adults to a data dashboard, or to create a new data dashboard.
2. Develop an older adult state profile (*use the template below or develop your own*).

### Considerations:

1. Note components that you would like to include if you had them, e.g., socioeconomic information, social determinants of health, etc.
2. What data is available to you and what data do you need to work with partners to obtain?



# Practical Application: Create a Communication Plan

STATE

YOUR LOGO  
HERE

## Older Adult State Profile

### Demographic Information

Total State Population		Older Adult Population	
Percentage of total			

### Health Conditions and Behaviors

	Number	Percentage
Falls		
Alzheimer’s disease & related dementias		
Access to care		
Flu vaccinations		
Mental distress		

# TFAH is Here to Help!

---

Megan Wolfe

[mwolfe@tfah.org](mailto:mwolfe@tfah.org)

Karon Phillips

[kphillips@tfah.org](mailto:kphillips@tfah.org)

